

learn more than a language

# Exeter 2012



## Junior Summer Courses (Ages 12-17)

## About IP

Every year we bring together more than 3000 students from all over the world in **several European destinations** to learn English, French, Spanish, or German. With over 25 years of experience, we have gained an unrivalled insight into what students want from their language courses. Our aim is to combine **proficient language learning** with a great summer holiday experience in an international atmosphere.

Our summer schools are created for young people who want to belong to an **international community**. They are run by our International Team dedicated to making their stay an international experience. We choose each of our centres with great care, so students can enjoy their holidays in an exciting and safe summer destination.



## About Exeter

- Capital of Devon, historic student town
- Population: 118,000 people
- Further information: [www.exeter.gov.uk](http://www.exeter.gov.uk)
- Public transport (approx. prices): £ 12,50 per week no photo



## Local Facilities

- Close to sandy, guarded beaches, e.g. Exmouth (8 miles)
- Excellent shopping opportunities in the town centre
- Banks, post-office, and supermarkets in the town centre
- A variety of local restaurants, cafés, and bars
- Unique historic quayside at the river Exe
- Mol's Coffee House and the Ship Inn – both favourite haunts of Francis Drake and Walter Raleigh
- Exeter Cathedral, consecrated in 1133 and rebuilt in the late medieval period
- Northernhay and Rougemont Gardens

## Sports Facilities in Town

- Ten Pin Bowling
- Golf (approximately 2 miles from St. Luke's):
- Tennis (see Tennis Special for more details)
- Horseback Riding in Budleigh Salterton: Budleigh Salterton Riding School, Dalditch Lane, Tel: 01395- 442035;
- Fishing in Exmouth: Stuart Line, (£ 10 for 3 hours) Reservation: 07977-203099, Booking: 01395-275882
- Water sports in Exmouth: Windsurfing, Water Skiing, Powerboat Racing, Sailing, Diving and Rowing Only offered on demand and prices given upon special request!

The above mentioned activities are not included in the programme, but they can be booked upon special request at the centre!

## Town Map



## How to get there?

- By plane to **London Heathrow**: For students coming to the UK, we recommend the IP Low Budget Transfer: which is bookable on a Saturday or Sunday before 17.00. If you have booked the **low budget transfer** please make your own way to Terminal 5 / Meeting Point for 17.00. A member of staff will be at the airport to welcome our students between the hours of 10.00 and 17.00. The coach to the centre will leave at 18h00. On the day of departure our low budget shuttle will leave the centre between 6.00 and 8.00 and arrive at London Heathrow around 12.00. Students may have to wait before their flight departs, but please, bear in mind that they should check in 2 hours before take-off. This requires a flight departure from Heathrow Airport after 14.00.
- If you're arriving or **leaving outside this timeframe or at any other airport** you can book a **private transfer**. Private transfers are offered from London Heathrow, London Gatwick, London City (4 hours), Bristol (1hour), and Exeter (15 minutes). Our Meet & Greet-Service will be waiting for you at the customs exit and ensure a safe transfer to the centre. On the day of departure, private transfers will leave the centre as required to make sure that the students are also able to complete a timely check-in. Please keep in mind that students may have to wait a length of time before their flight departs in order for our staff to comply with a 2 hour pre-departure check-in.
- **Groups** will generally receive a Meet & Greet-Service at their customs exit from a member of IP staff and get accompanied to the departure Terminal.
- On the day of departure we will drop our clients off at the airport. If they would like to be taken directly to the check-in desk, please inquire about our **Unaccompanied Minor Service**. You also have to book our UM-Service if your client uses the UM-service for the flight.
- **By Eurostar (train)**: Meet & Greet Service and transfers are offered from London St. Pancras (4 hours).
- **By train**: You can take the train independently from London Paddington to Exeter St. Davids (3,5 hours), walking distance to St. Luke's Campus is about 25 minutes; taxi costs approximately 5 £. **Alternatively**: take a bus shuttle from London Heathrow to Reading Railway Station, then take the train to Exeter St. Davids (3,5 hours).
- **By National Express**: The National Express coaches travel from London (and London Heathrow) to Exeter directly (ca. 4 hours). The coach station is in the city centre of Exeter. You can walk to the campus in approximately 10 minutes from the coach station. For more information please visit: [www.nationalexpress.co.uk](http://www.nationalexpress.co.uk)

**Please note: transfers are not included in the package!**

## Centre Description – St. Luke’s Campus

Our summer school for juniors (12 – 17 years) is located in the self-contained St Luke’s Campus at Exeter University. Located southeast of the city, St Luke’s Campus is built around an attractive lawn quadrangle, which easily converts to grassed tennis courts.

All students have lessons and activities on campus. During the day they also have access to a variety of leisure facilities. Students can choose between home stay accommodation in Exeter and surrounding areas, and residential accommodation on campus.

During peak season we have up to 200 students in the centre.

Students come mainly from Germany, Italy, Spain, France, and Eastern Europe. The geographical diversity of our group allows our students to be in a multicultural environment, using English as a means of communication.

A wide variety of activities are offered on campus, a focus is set on fashion and beauty, please see the sample programme for more details.

Students are under the supervision of our international team (generally, one supervisor is responsible for 15 students aged 13-15, as well as one supervisor for 10 students aged 10-12). Further information about the members of staff and the languages they speak is available before arrival to the course centre.



## Location

- 10-minute walk from the town centre
- 8 miles from the nearest beach (Exmouth) by public transport (train: 3,70 GBP return)
- Bus stops directly at the campus; train station app. 15 minutes from the campus
- Bank, post-office, and supermarket are located in the town centre, there is also a small supermarket on the campus
- Cafés, bars, and restaurants can be found in the town centre
- Five-minute walk from a newly opened cinema complex



## Facilities

- Modern classrooms in the campus’ main buildings
- Dining hall: large room for approximately 170 students
- Large grassy area for all sort of activities, such as soccer
- Sports facilities: indoor heated swimming pool (reserved once a week), softball pitch, volleyball pitch, grassed tennis courts and soccer field
- Athletic hall with gym, football, cricket, tennis, and hockey pitches can be reserved in the private leisure centre on campus (at additional costs)
- Ocean Lounge: focal meeting point for our students
- Refrigerator, e.g. for medicine

## Campus Map



## Seasonal Contact Details

IP Exeter  
University of Exeter  
St Luke's Campus  
Heavitree Road  
Exeter  
EX1 2LU  
Great Britain  
[exeter@internationalprojects.com](mailto:exeter@internationalprojects.com)

Emergency phone number (24hrs a day): 07435 842 834

## Residential Accommodation – St Luke's Campus

The residential facilities include modern study blocks located on the eastern side of St. Luke's campus. The various residences are within easy reach of activities, lessons, and meals.

### College House (90 Rooms)

- Modern building on three levels
- All rooms are standard single rooms room with shared shower and toilet facilities on campus or in en-suite single or twin rooms
- Television lounge on the ground floor
- Beds, wardrobe, desk and chair in all rooms
- big wardrobe / not lockable
- floor: carpet
- lockable rooms, normally one key per student
- room size: approx 4\*2 metres



### South Cloisters (85 rooms)

- two-storey building
- single standard rooms
- Ratio of showers is 1 per 8 students
- small common room on the ground floor with casual chairs and a TV
- beds, wardrobe, desk, and chair in every room
- Big wardrobe / not lockable
- Floor: carpet
- Lockable rooms, normally one key per student
- Room size: approx 4.2 metres

### New Nancherrow (15 Rooms)

- Modern study block
- All rooms are single en-suite
- Small kitchen (cooking not possible)
- No common room available
- Beds, wardrobe, desk, and chair in every room
- Big wardrobe / not lockable
- Floor: carpet
- Lockable rooms, normally one key per student
- Room size: approx 4.2 metres

### General Information

- 1 key given per person
- Bedding: provided and changed weekly
- Towels: provided in standard accommodations and en-suite accommodations
- No cookers available/refrigerators can be used
- Rooms and washrooms cleaned twice a week
- Pay phones on campus
- Self-service laundry on campus
- No safe, but safe storage for valuables available
- Adapter: necessary, but not provided

### Meal Plan

Students receive full-board accommodations in the self-service dining hall on campus. Vegetarian options are offered daily, Gluten-free, Lactose-free, Kosher, and Halal food is available upon request.

- Breakfast: 8.00 - 8.45 in the dining hall
- Lunch: 12.30 - 13.15 in the dining hall
- Dinner: 18.00 - 19.00 in the dining hall

Please note: After full day trips to London a cold dinner will be provided since the kitchen is closed at the time of return.

## Exeter Sample Menu 2012

	MONDAY	TUESDAY	WEDNESDAY	THURSDAY	FRIDAY	SATURDAY	SUNDAY
<b>BREAKFAST</b>	Toast and Croissant Butter & Jam Cereal Hot Drinks (Coffee, Tea) Orange Juice Fruit Yoghurt	Toast and Croissant Butter & Jam Cereal Hot Drinks (Coffee, Tea) Orange Juice Fruit Yoghurt	Toast and Croissant Butter & Jam Cereal Hot Drinks (Coffee, Tea) Orange Juice Fruit Yoghurt	Toast and Croissant Butter & Jam Cereal Hot Drinks (Coffee, Tea) Orange Juice Fruit Yoghurt	Toast and Croissant Butter & Jam Cereal Hot Drinks (Coffee, Tea) Orange Juice Fruit Yoghurt	Toast and Croissant Butter & Jam Cereal Hot Drinks (Coffee, Tea) Orange Juice Fruit Yoghurt	Toast and Croissant Butter & Jam Cereal Hot Drinks (Coffee, Tea) Orange Juice Fruit Yoghurt Cooked Breakfast
<b>LUNCH</b>	Spaghetti Bolognese OR Vegetable Burger Bap Vegetable Potatoes Blueberry Muffin OR Fruit  Salad buffet	Ham & Pineapple Pizza OR Quorn Balti & Rice Vegetables Potatoes Caramel Shortbread OR Fruit  Salad buffet	Chicken Korma & Rice OR Spinach & Feta Filo Puff Vegetables Potatoes Fruit Yoghurt OR Fruit  Salad buffet	Meatballs & Pasta OR Vegetable Kiev Vegetable Potatoes Jam Donut OR Fruit  Salad buffet	Battered Haddock OR Quorn Lasagne Vegetables Potatoes Chocolate Muffin OR Fruit  Salad buffet	Lamb Cutlet OR Mushroom Ravioli Vegetables Potatoes Fruit Yoghurt OR Fruit  Salad buffet	Roast Chicken OR S&S Vegetables & Rice Vegetables Potatoes Ring Donut OR Fruit  Salad buffet
<b>DINNER</b>	Breaded Scampi OR Cheese & Onion Pizza Vegetable Potatoe Salad Chocolate Sponge with Sauce OR Fruit  Salad buffet	Chicken Kiev OR Broccoli Quiche Vegetables Potatoes Strawberry Gateau OR Fruit  Salad buffet	Braised Sausages OR Creamy Vegetable Pasta Vegetables Potatoes Peach Crumble & Cream OR Fruit  Salad buffet	Chicken Burger Bap OR S&S Veggie Spring Rolls & Rice Vegetables Potatoes Chocolate Gateau OR Fruit  Salad buffet	Cottage Pie OR Veggie Sausages & Gravy Vegetables Potatoes Jam Sponge & Custard OR Fruit  Salad buffet	Chicken Pasta OR Cheese & Onion Pasty Vegetables Potatoes Lemon Gateau OR Fruit  Salad buffet	Lamb Burger Bap OR Macaroni Cheese Vegetables Potatoes Apple Pie & Cream OR Fruit  Salad buffet

**Breakfast:** 5 items only, unlimited toast, hot drinks including coffee and tea

**Lunch and Dinner:** Squash/water provided with all meals, salad with oil & vinegar and bread.

## Home Stay Accommodation

- In Exeter. Max. 60 minutes by bus from school.
- All hosts respect our strict home stay guidelines and are carefully chosen by our local Welfare Manager
- Students get breakfast, packed-lunch and dinner
- Bedding: provided and changed weekly
- Towels: not provided
- Students can receive phone calls in their private home and public phone booths are in town
- A reasonable amount of laundry is included in the household wash
- In most cases students will share a room with peers of the same sex in twin rooms, however single or triple accommodation is a possibility. Ideally they will also share a room with students speaking another native language (unless they request to stay with a friend), however, please bear in mind, that this may not always be practical
- During peak time it is possible that a maximum of four students from two different nationalities are placed in one home
- Access to the household in the afternoon and evenings
- Hosts assist students with travel between home and IP centre on the first day of school
- Students aged 12 and below will receive a transfer from their homestay provider to the center and back if the family lives further away than half a mile walking distance (pick up in the morning / drop off in time for dinner). If a transfer needs to be organized students are not able to participate in the evening programme. If you like to avoid this please make sure to place the student in the residence.

## Lessons

- Our summer school is accredited by British Council
- Take place on St Luke's Campus
- 15 classrooms
- **Courses available:** General English Course (15 x 45 minutes per week), Intensive English Course (20 x 45 minutes per week), One-to-One lessons available on request.
- **Trinity Oral Examination** available (to be booked in advance, please book Intensive Course for preparation). **Exam dates: 13<sup>th</sup> July, 27<sup>th</sup> July, 10<sup>th</sup> August 2012**
- **Levels:** Lower Intermediate (A2), Intermediate (B1), Upper Intermediate (B2), and Advanced (C1)
- **Placement Test** on the 1<sup>st</sup> day at 9.00, class allocation at 11.00
- Teaching material provided
- **IP Certificate** at the end of the course
- Our courses follow the European Framework of Reference Levels
- No more than **15 students** are placed in one group. Generally, students have different native languages and are nearly the same age.
- **90 % of our teachers are native speakers** and a maximum of 10 % are native level speakers. All of our teachers are qualified, which means either a TEFL qualification or a teaching qualification (PGCE Primary / PGCE Secondary for Modern Languages).
- **Lesson times:** 1<sup>st</sup> lesson: 9.00-9.45; 2<sup>nd</sup> lesson: 9.45-10.30; Break: 10.30-11.00; 3<sup>rd</sup> lesson: 11.00-11.45; 4<sup>th</sup> lesson: 11.45-12.30
- 



## Supervision

Our friendly and helpful **International Team** with staff members from England, Germany, France, Spain, Russia and other countries will run a fully supervised activity programme and guarantee supervision. Our supervision ratio depends on the age range of students: for students 12 and younger we follow a ratio of 1:10, for the age group 13 and older we follow the ratio of 1:15. The members of our team have been carefully selected for their responsible and caring attitude, as well as their fun-loving and outgoing personalities. They are the people your students can turn to at any time for assistance.

Our members of staff have been trained in three different sessions totalling ten days of intense preparation for their summer job.

## Sample Programme

We offer an exciting and supervised activity programme during the afternoons & evenings, 7 days a week.

	Monday	Tuesday	Wednesday	Thursday	Friday	Saturday	Sunday	
Morning	Breakfast	Breakfast	Breakfast	Breakfast	Breakfast	Breakfast	Breakfast	
	9.00-10.30 Lessons	9.00-10.30 Lessons	9.00-10.30 Lessons	9.00-10.30 Lessons	9.00-10.30 Lessons			
	10.30 Ocean Lounge							
	11.00 Lessons	11.00 Lessons	11.00 Lessons	11.00 Lessons	11.00 Lessons			
	12.30 Assembly							
	Lunch	Lunch	Lunch	Lunch	Lunch	Lunch	Lunch	Lunch
Afternoon Students can choose between several activities available	14.00-17.00 Workshops: <b>Fashion &amp; Beauty (pimp your clothes, nails, make-up, hair styles henna, relaxation, shopping)</b> Arts and Crafts (origami, bracelets, design cards/masks, face-paint), Dance, Scavengers hunt, Open Stage Preparation Optional activity with supplement on offer					14.00 Welcome Meeting	14.00-17.00 Fun Games	
	14.00-17.00 Campus Sports (Basketball, Volleyball, Swimming, Football, Tennis) Optional activity with supplement (bowling, tennis)				15.00 London Preparation	15.00 Farewell Meeting	15.00-17.00 Town Walk & Town Quiz	
	14:00 – 17:00 IP Ocean Lounge							
	TTT	TTT	TTT	TTT	TTT			
	Dinner	Dinner	Dinner	Dinner	Dinner	Dinner	Dinner	
	Evening	19:30-22.00 Welcome Party	19:30-22.00 Theme Night	19:30-22.00 Open Air	19:30-22.00 Open	19:30-22.00 IP Party	19:30-22.00 Quiz Night	19.30-22.00 Film Night
Trips 2 HD-trips and 1FD-trip included per fortnight.		13.30-18.00 Torquay or Exmouth Beach Trip		13.30-18.00 Dartmoor or Dunster		7.00-23.00 London or Bath	07.00-18.00 Cornwall (St. Yves)	

\*TTT (Time to talk): Students meet their personal supervisor

\*Entrance fee included

## Trip Programme

**2 Half-Day Trips and 1 Full-Day Trip included per fortnight. Additional trips can be booked in the centre. Entrance fees are not included for excursions!**

### Full-Day: London

If you travel to England, you simply have to see London! We try to get as much as possible out of our day in this fascinating city. We leave Exeter around 07h00 and after a short stop at Heathrow Airport we'll arrive in the city centre of London at about 11h30. During our guided tour we will pass Trafalgar Square, The Mall, Buckingham Palace, Birdcage Walk, Houses of Parliament, Big Ben, Westminster Abbey, London Eye, and Piccadilly Circus (entrance fees are not included).

After our tour it's shopping time! Shopping is not supervised and is only permitted in groups with minimum of 3 students. Our shopping venues include Oxford Street, Regent Street, and Carnaby Street.

Alternatively, you may choose to visit the Hard Rock Café or the famous Covent Garden. At Covent Garden you will have the opportunity to watch a variety of street artists and jugglers.

As you may notice, the possibilities are endless, and you will have a difficult time deciding how to spend your one magnificent day in London. At about 17h00 we will leave London; tired after an exciting day, but with countless memories to look back on. When we return to the centre around 22h00 we will definitely be ready for a good night's sleep!

### Full-Day: Bath

Bath's "heyday" was in the 18<sup>th</sup> century when it was a fashionable spa town, and was the "hot spot" for English high society. Much of the architecture of Bath dates back to this time, and the city is famous for its elegant Georgian townhouses, and sweeping crescents. Today Bath is one of the most beautiful cities in the UK, and has been declared a World Heritage Site by UNESCO.

We will leave the centre at around 0800h and arrive in Bath approximately 2.5 hours later. After a guided tour around the city, your free time may be spent shopping or visiting the Roman Baths & Pump Room, Pulteney Bridge, Bath Abbey, or the Royal Crescent (entrance fees not included). At about 16h00 we will leave Bath and return to Exeter around 1800h.

### Full-Day: Cornwall

Departing around 0730h this full-day trip will lead us to St. Ives, one of Cornwall's most famous holiday towns. A mild climate, warmed by the Gulf-Stream, and almost frost-free winters make it possible to grow plants and shrubs native to the semi-tropical countries hundreds of miles south. Along with its tradition of fishing, St. Ives is world famous for its art centre, studios, shops, and galleries all over town. The Tate St. Ives, part of the Tate Gallery in London, was opened in 1993 and is, perhaps, the flagship of Cornish art. After such an exciting trip we will be back in the centre in time for dinner.

### Half-Day: Torquay

Would you like to walk the "Agatha Christie" mile and visit some of the places that inspired her writing? Then you must join our half-day trip to Torquay (departure from the centre at 1400h), known as the "Queen of the English Riviera" town. Torquay acquired its popularity as a holiday retreat for Victorians who wanted to enjoy its mild climate. Much of the town's earlier style and elegance has remained present in its modern internationally renowned marina. The parks and gardens along the seafront are outstanding. They provide stunning floral displays, as well as wide-open grassy areas for picnics. Torquay has a modern shopping centre with many high end brand names, as well as a variety of smaller, more individual boutiques, gift, and craft shops. Travel by bus to this major seaside resort in the heart of the English Riviera. Take the time to enjoy the beach, the palm tree lined promenade, and do some luxury shopping. The trip begins with a short-guided tour along the famous "Rock Walk", taking in some of the cliffs on which Torquay is built. We will be back at the centre at 1800h.

### Half-Day: Dartmoor

In 1951 Dartmoor was designated as one of the National Parks of England and Wales. It is a beautiful moorland landscape with wooded valleys and wind swept Tors. It covers 953 sq. Km, with a population of approximately 33,000 people, and 10 million visitors each year. The land itself is privately owned, however the public is allowed to roam freely in the open moorland both on foot and horse. Additionally, there are 966 km of public rights of way. Dartmoor is a rich habitat for wildlife and has a wealth of archaeological remains.

We will depart from the centre at about 1400h. After a spectacular drive through some typical Dartmoor scenery, with sheep and original Dartmoor ponies, our first stop will be Lydford Gorge, a lush-wooded steep-sided river. Enjoy the unique view over the moor landscape in all its wondrous facets. Our second highlight of this outing will be the picturesque Widecombe-on-the-moor village, with its church and tiny souvenir shops. We will be back at the centre at 1800h for dinner.

### Half-Day: Exmouth

Exmouth is a safe and beautiful seaside resort with one of Devon's most popular sandy beaches. Enjoying the benefits of the Gulf- Stream, Exmouth has a very mild climate making it an ideal place for a day at the beach! You will find plenty of shops, cafés, and bars in and around the town centre. Departure from the centre will be around 1400h, and we will be back in time for dinner at the centre.

### Half-Day: Dunster

Dunster is a small historic market town in the heart of Exmoor. It is dominated by the beautiful medieval Dunster castle. Part of our half day excursion is visiting the castle's entrance and its stunning gardens. After our visit to the castle feel free to stroll through the main street with its charming little shops and cafés. Departure from the centre will be around 1400h, and we will be back in time for dinner at the centre.

## Special Programme

### Special: Tennis Training

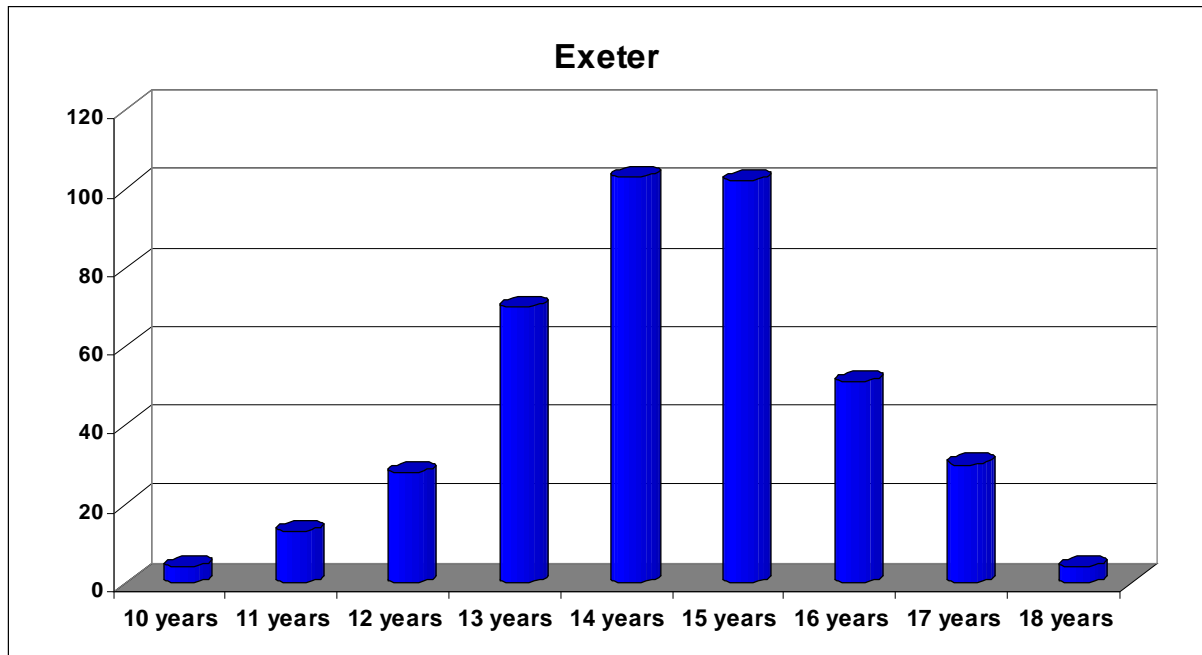
You will get 9 lessons (120mins each) of professional tennis training per fortnight. Our international tennis coaches will show you how to play tennis. Some tournaments will allow you to practise your newly developed skills. This special is not included in the programme but can be chosen at the time of booking as an upgrade. Please note that you won't be able to go on trips if book this special. You can start this tennis course on 4th July, 18th July and 01st August 2011. Equipment will not be provided.

### The Incredible Party Night

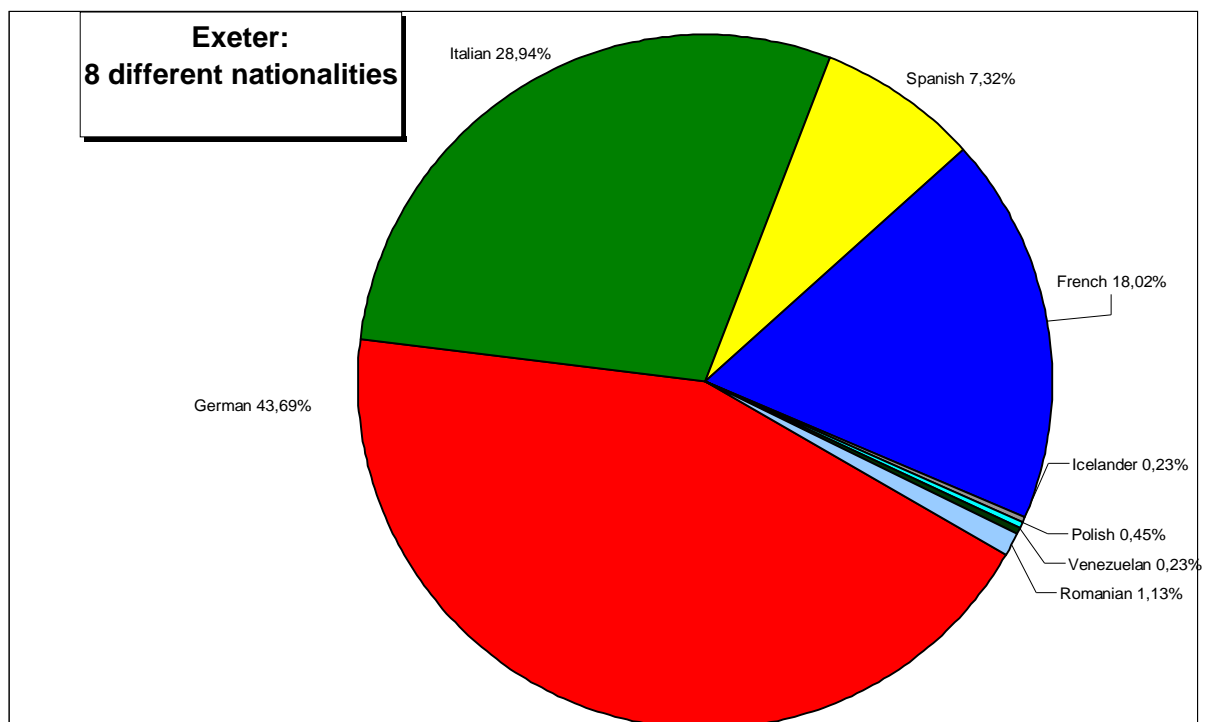
Students from Exmouth, Teignmouth, and Exeter meet together at a cool location for an awesome party. Our DJ spins the latest summer hits to make sure nothing stands in the way of an unforgettable party.

Our Mega-Event for summer 2012 takes place on 06.07, 20.07, and 03.08.2012. You can snag your ticket on location for 12 GBP. The ticket price includes bus transportation to and from the party, admission, and an alcohol-free welcome cocktail.

## Students 2011 – Ages



## Students 2011 – Nationalities



## International Projects' Rules and Regulations for Students

- **Alcohol and Drugs** The consumption of alcohol and drugs is strictly forbidden. Law prohibits young adults under the age of 18 from buying or consuming alcohol in the UK.
- **Pubs, Discos, and Amusements** Young adults under the age of 16 are not allowed to enter pubs in the UK. Students 16 years of age are permitted in a pub until 21.30, but are only able to buy and consume soft drinks. Visiting pubs is only advisable if you are accompanied by a member of staff, group leader, or home stay host. Discos / Nightclubs and amusement arcades are strictly out of bounds for all students under 18 years of age.
- **Smoking** It is illegal for young adults under the age of 18 to buy and smoke cigarettes at all destinations.
- **Theft** Shoplifters and thieves are prosecuted in the UK, irrespective of the value of the stolen article.
- **Weapons and Dangerous Articles** All weapons (including flick-knives) are forbidden. CS gas is also illegal.
- **Fire Extinguishers** Fire extinguishers are located throughout the centres and their buildings. These are for emergency use only. If a fire extinguisher is tampered with in ANY way, students will be fined for its misuse.
- **Going Out** Students are allowed to go out in the evenings in groups with a minimum of 3 students pending the Centre Manager's permission. They must adhere to the following laws and be back in the residence or with their private host by: Ages 13 & 14: 22h00, 15 & older: 24h00. If you are going to be late please call your host or centre office in order to ensure that we know where you are and do not have to look for you. The above times do not apply when students are involved in an organised evening activity. **This rule does not apply to students under the age of 13 since they have to be supervised at all times.**
- **Leaving the Campus / College grounds/ Arranging their own excursion** Students under the age of 17 are not allowed to leave the destination town or village unless they are accompanied by a member of staff.
- **Doors** Entrance doors to the residences **must not** be kept open. This is for your own safety. Theft can, and does occur. Careless security on your part will place you and your belongings at risk.
- **Compulsory Activities** All lessons along with the daily morning assembly must be attended.
- **Damage** Incidences of damage to property and buildings caused by misuse or vandalism will be dealt with severely. Students will have to pay for ALL damages.
- **Private** Doors which are marked with signs that state "private" are not to be opened. Some private areas will be unlocked for fire safety reasons, but entrance is still forbidden.
- **Noise** Students are asked to respect those around them, and keep noise to a minimum when returning to residences or private homes late in the evening. Social areas in the residences may be used after the evening activity finishes, but students should be in their rooms by 23.00. Students are not to congregate outside residences late in the evening. Many centres are situated in residential areas – please be considerate of those who live close by.
- **Mobiles** The use of mobile telephones during lesson time is strictly prohibited. Failure to comply with this may result in staff confiscating your mobile phone. IP staff does not accept any responsibility for the loss of or damage to mobile phones.
- **Swimming** Swimming in the sea is allowed on the condition that your parents have not specified otherwise. Swimming in the sea is not an organised IP activity, and therefore IP staff cannot be held responsible for student safety. Swimming in the sea when the red flag is flying is absolutely forbidden.
- **Internationalism** International Projects' aim is to bring young people from all over the world together in an environment where they can meet friends and have fun. Racist or sexist behaviour towards other students will not be tolerated.

### Parental Permission

We guarantee that our qualified staff will supervise all elements of the IP programme. However, some of the additional activities such as: diving, sailing, surfing, riding a bike, and horse riding we work with local providers, and require your permission for your child to take part in these activities. The same applies for activities undertaken by your son/daughter on their own outside of the IP Programme.

Please complete the form below in order to stop your child from taking part in the following activities:

- My son/daughter is allowed to be in town on his / her own after .....(please specify).
- My son/daughter is allowed to swim in the sea at her / his own risk.
- In case of hospitalisation, I authorize the legal representative of IP to take all necessary decisions (medical treatments, hospitalisation, surgery) regarding my child in respect of the medical report and will reimburse all medical expenses that could possibly be engaged by IP for my child.

I, THE UNDERSIGNED.....(First name).....(Surname)  
 PARENT OR LEGAL GUARDIAN OF:  
 First name..... Surname.....  
 Date of birth.....  
 Staying in ..... Arrival Date: .....

I do not want my child to take part in the activities mentioned in point 1 to 3 (please ignore if not applicable)

DATE:.....SIGNATURE: .....

PLEASE NOTE: THIS AUTHORIZATION HAS TO BE RETURNED TO THE IP OFFICE IN BREMEN ONE WEEK BEFORE ARRIVAL.

If the Parental Permission form is not returned, IP assumes that the parents agree to the set standards and procedures which govern our language holidays and are based on the laws of the destination country.