

learn more than a language

europa  
school of english  
an ip international projects school

# Exmouth 2012



## Junior Summer Courses (Ages 13-17)

international  
projects **ip**  
language courses abroad

offaehrte  
sprachreisen

europa  
school of english

celf  
centre d'enseignement  
de langues en france

Europa School of English  
Belfast House, Gervis Place  
Bournemouth, BH1 2AL  
England

Phone: ++44-1202-553 145  
Fax: ++44-1202-366-865  
info@europa-school.co.uk  
www.europa-school.co.uk

## About IP

Every year we bring together more than 3000 students from all over the world in **several European destinations** to learn English, French, Spanish, or German. With over 25 years of experience, we have gained an unrivalled insight into what students want from their language courses. Our aim is to combine **proficient language learning** with a great summer holiday experience in an international atmosphere.

Our summer schools are created for young people who want to belong to an **international community**. They are run by our International Team dedicated to making their stay an international experience. We choose each of our centres with great care, so students can enjoy their holidays in an exciting and safe summer destination.



## About Exmouth

- Small seaside resort in Devon, near Exeter (15km)
- Population 40.000
- Further information: [www.exmouth-guide.co.uk](http://www.exmouth-guide.co.uk)
- Public transport (approx. prices): Single £ 2, £ 9,50 per week no photo required (Megarider Ticket)



## Local Facilities

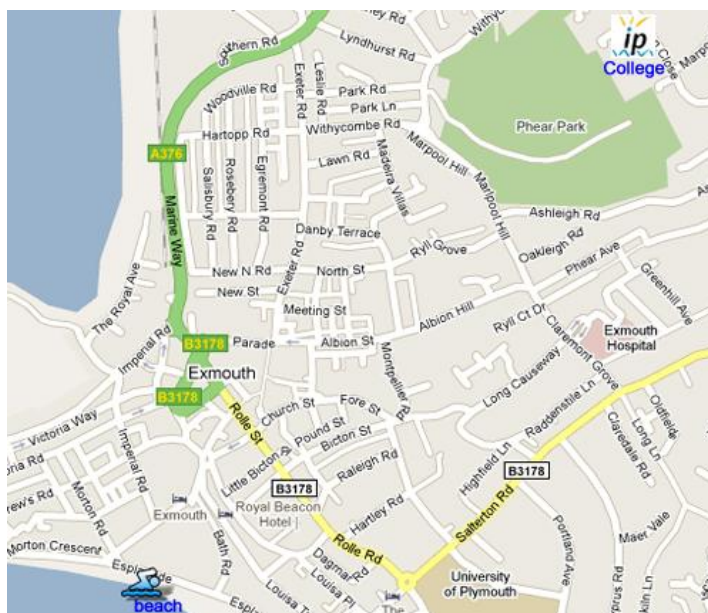
- Great sandy, guarded beach
- Shopping facilities, banks, post-office, and supermarkets in the town centre
- Selection of local restaurants, cafés, and bars
- Small, but nice parks on the seafront
- Indoor Market

## Sport Facilities in Town

- Swimming Pool: Exmouth Sports Centre, Royal Avenue, Tel: 01395- 266381;
- Tennis: East Devon Tennis Centre, Withycombe Village Road; Tel: 01395- 223355
- In-line skating : Skate park in Phear Park is free of charge! It is not possible to rent in-line skates in Exmouth!
- Horse Riding: Budleigh Salterton Riding School Dalditch Lane, Tel: 01395- 442035
- Fishing: Stuart Line, Reservation: 07977-203099, Booking: 01395-275882
- Golf: Phear Park, Withycombe Village Road, phone.:01395-277514
- Water sports: Windsurfing, Water Skiing, Powerboat Racing, Sailing, Diving, and Rowing
- Edgewater sports, The Royal Avenue, Booking: 01395-222551

**The above mentioned activities are not included in the programme but can be booked upon special request in the centre!**

## Town Map



Main Meeting Points for activities: Exmouth Community College, Phear Park, Manor Gardens, Clock Tower, Exmouth Railway/Coach Park

## How to get there?

- By plane to **London Heathrow**: For students coming to the UK, we recommend the IP Low Budget Transfer: which is bookable on a Saturday or Sunday before 17.00. If you have booked the **low budget transfer** please make your own way to Terminal 5 / Meeting Point for 17.00. A member of staff will be at the airport to welcome our students between the hours of 10.00 and 17.00. The coach to the centre will leave at 18h00. On the day of departure our low budget shuttle will leave the centre between 6.00 and 8.00 and arrive at London Heathrow around 12.00. Students may have to wait before their flight departs, but please, bear in mind that they should check in 2 hours before take-off. This requires a flight departure from Heathrow Airport after 14.00.
- If you're arriving or **leaving outside this timeframe or at any other airport** you can book a **private transfer**. Private transfers are offered from London Heathrow, London Gatwick, London City (4 hours), Bristol (1,5 hours), and Exeter (1hr). Our Meet & Greet-Service will be waiting for you at the customs exit and ensure a safe transfer to the centre. On the day of departure, private transfers will leave the centre as required to make sure that the students are also able to complete a timely check-in. Please keep in mind that students may have to wait a length of time before their flight departs in order for our staff to comply with a 2 hour pre-departure check-in.
- **Groups** will generally receive a Meet & Greet-Service at their customs exit from a member of IP staff and get accompanied to the departure Terminal.
- On the day of departure we will drop our clients off at the airport. If they would like to be taken directly to the check-in desk, please inquire about our **Unaccompanied Minor Service**. You also have to book our UM-Service if your client uses the UM-service for the flight.
- **By Eurostar (train)**: Meet & Greet Service and transfers are offered from London St. Pancras (4 hours).
- **By train**: You can take the independently from London to Exmouth (4-5 hours). The train station is a 10-minute walk away from the Community College, taxi costs approx. 5£.

**By National Express:** The National Express coaches travel from London to Exmouth (ca. 6 hours), but it is quicker to take the coach to Exmouth, and connect to a train or the stage coach (number 52 or 57) from there. Stops are at the train station, taxi costs approx 5£. For further information please visit: [www.nationalexpress.co.uk](http://www.nationalexpress.co.uk)

**Please note: transfers are not included in the package!**

## Centre Description

Our summer school for juniors (12-17 years) is located at Exmouth Community College, just a 10-minute walk away from the town centre.

Exmouth is our oldest centre in the UK, and in peak season we have up to 150 students in our program per week. Our students come mainly from Germany, Italy, Spain, and France. The diverse background of our students provides a multi-cultural environment where English is the means of communication. Afternoon and evening activities are organized by our international team. See the sample programme for details.

Students are under the supervision of our international team (generally, one supervisor is responsible for 15 students). Further information about the members of staff and the languages they speak is available before arrival to the course centre.



## Location

- Exmouth Community College is a 10-minute walk from the beach and the town centre
- Bank, post-office, and supermarket are located in the town centre.
- Bus Stop: The Strand (all bus services leave from there) and The Parade
- Address: Exmouth Community College, Gipsy Lane, Exmouth, EX 8 3 AF



## Facilities

- Classrooms: located in the College's main buildings
- Common room at the college and other locations in the town centre are available for some afternoon and evening events
- Sport facilities for Volleyball, Football and Basketball available at the college or in Phear Park and at the beach

## Seasonal Contact Details

### IP Exmouth

Exmouth Community College  
 Gipsy Lane  
 Exmouth, Devon  
 EX 8 3 AF  
 UK

[exmouth@internationalprojects.com](mailto:exmouth@internationalprojects.com)

**Emergency phone number (24hrs a day): 07435 842 835**

## Home Stay Accommodation

- In Exmouth, max. 45 minutes by bus from school
- All of our hosts respect our strict home stay guidelines and are carefully chosen by our local Welfare Manager
- Students get breakfast, packed-lunch and dinner
- Bedding: provided and changed weekly
- Towels: not provided
- Students can receive phone calls in their private home and public phone booths are in town
- A reasonable amount of laundry is included in the household wash
- In most cases students will share a room with peers of the same sex in twin rooms, however single or triple accommodation is a possibility. Ideally they will also share a room with students speaking another native language (unless they request to stay with a friend), however, please bear in mind, that this may not always be practical
- During peak time it is possible for more than four students to be placed in one home
- Access to the household in the evenings
- Hosts assist students with travel between home and IP centre on the first day of school

## Lessons

- Our summer school is accredited by British Council
- Take place at the Community College
- Classrooms partly equipped with TV and VCR
- Courses available: General English Course (15 x 45 minutes per week), Intensive English Course (20 x 45 minutes per week), One-to-One lessons available upon request.
- **Trinity Oral Examination** available (to be booked in advance, please book Intensive Course for preparation). **Exam dates: 13<sup>th</sup> July, 27<sup>th</sup> July, 10<sup>th</sup> August 2012**
- Levels: Lower Intermediate (A2), Intermediate (B1), Upper Intermediate (B2), and Advanced (C1)
- Placement Test on the 1<sup>st</sup> day
- **Teaching material provided**
- IP Certificate at the end of the course
- Our courses follow the European Framework of Reference Levels
- There will be no more than **15 students** per group. Generally, these students have varying native languages and of similar age
- **90 % of our teachers are native speakers** and a maximum of 10 % are native level speakers. All of our teachers are qualified, which means either a TEFL qualification or a teaching qualification (PGCE Primary / PGCE Secondary for Modern Languages).
- **Lesson times:** 1<sup>st</sup> lesson: 9.00-9.45; 2<sup>nd</sup> lesson: 9.45-10.30; Break: 10.30-11.00; 3<sup>rd</sup> lesson: 11.00-11.45; 4<sup>th</sup> lesson: 11.45-12.30



## Supervision

Our friendly and helpful **International Team** with staff members from England, Germany, France, Spain, Russia and other countries will run a fully supervised activity programme and guarantee supervision.

Our supervision ratio depends on the age range of students: for students 12 and younger we follow a ratio of 1:10, for the age group 13 and older we follow the ratio of 1:15. The members of our team have been carefully selected for their responsible and caring attitude, as well as their fun-loving and outgoing personalities. They are the people your students can turn to at any time for assistance.

Our members of staff have been trained in three different sessions totalling ten days of intense preparation for their summer job.

## Sample Programme

	MONDAY	TUESDAY	WEDNESDAY	THURSDAY	FRIDAY	SATURDAY	SUNDAY	
<b>MORNING</b>	Breakfast	Breakfast	Breakfast	Breakfast	Breakfast	Breakfast	Breakfast	
	9.00-10.30 Lessons	9.00-10.30 Lessons	9.00-10.30 Lessons	9.00-10.30 Lessons	9.00-10.30 Lessons			
	10.30 Break							
	11.00 Lessons	11.00 Lessons	11.00 Lessons	11.00 Lessons	11.00 Lessons			
	12.30 Assembly & TTT							
	Lunch	Lunch	Lunch	Lunch	Lunch	Lunch	Lunch	
<b>AFTERNOON</b>	14.00-17.00 Workshops: Arts and Crafts (origami, bracelets, design cards/masks, face-paint), Dance, Health and Beauty (nails, make-up, henna, breathe your stress away) Scavengers hunt, Open Stage Preparation Optional activity with supplement on offer					14.00 Welcome Meeting	14.00-17.00 Beach Games	
	14.00-17.00 Sports (Softball, (Beach-)Volleyball, Basketball, Football, Frisbee, Sport Tournaments), Beach activities Optional activity with supplement (tennis, minigolf)				15.00 London Preparation	15.00 Farewell Meeting	15.00-17.00 Town Walk &Town Quiz	
	Dinner	Dinner	Dinner	Dinner	Dinner	Dinner	Dinner	
<b>EVENING</b>	19.30-22.00 Welcome Party	19.30-22.00 Open Air	19.30-22.00 Film Night	19.30-22.00 Open Stage	20.00-23.00 IP Party	19.30-22.00 Theme Night	19.30-22.00 Quiz-Night	
	<b>TRIPS</b> 2 HD-TRIPS AND 1FD- TRIP INCLUDED PER FORTNIGHT.	13.30-18.00 Exeter or Torquay		13.30-18.00 Dartmoor or Jurassic Coast		7.00-23.00 London or 09.00-18.00 Bath	07.00-18.00 Cornwall	

\*TTT (Time to talk): Students meet their personal supervisor

## Trip Programme

**2 Half-Day Trips and 1 Full-Day Trip included per fortnight. Additional trips can be booked in the centre. Entrance fees are not included for excursions!**

### Full-Day: London

If you travel to England, you simply have to see London! We try to get as much as possible out of our day in this fascinating city. We leave Exmouth around 0700h and after a short stop at Heathrow Airport we'll arrive in the city centre of London at about 1130h. During our guided tour we will pass

Trafalgar Square, The Mall, Buckingham Palace, Birdcage Walk, Houses of Parliament, Big Ben, Westminster Abbey, London Eye, and Piccadilly Circus (entrance fees are not included).

After our tour it's shopping time! Shopping is not supervised and is only permitted in groups with minimum of 3 students. Our shopping venues include Oxford Street, Regent Street, and Carnaby Street.

Alternatively, you may choose to visit the Hard Rock Café or the famous Covent Garden. At Covent Garden you will have the opportunity to watch a variety of street artists and jugglers.

As you may notice, the possibilities are endless, and you will have a difficult time deciding how to spend your one magnificent day in London. At about 17h00 we will leave London; tired after an exciting day, but with countless memories to look back on. When we return to the centre around 22h00 we will definitely be ready for a good night's sleep!

### Full-Day: Bath

Bath's "heyday" was in the 18<sup>th</sup> century when it was a fashionable spa town, and was the "hot spot" for English high society. Much of the architecture of Bath dates back to this time, and the city is famous for its elegant Georgian townhouses, and sweeping crescents. Today Bath is one of the most beautiful cities in the UK, and has been declared a World Heritage Site by UNESCO.

We will leave the centre at around 08h00 and arrive in Bath approximately 2.5 hours later. After a guided tour around the city, your free time may be spent shopping or visiting the Roman Baths & Pump Room, Pulteney Bridge, Bath Abbey, or the Royal Crescent (entrance fees not included). At about 1600h we will leave Bath and return to Exmouth around 1800h.

### Full-Day: Cornwall

Departing around 0730h this full-day trip will lead us to St. Ives, one of Cornwall's most famous holiday towns. A mild climate, warmed by the Gulf-Stream, and almost frost-free winters make it possible to grow plants and shrubs native to the semi-tropical countries hundreds of miles south. Along with its tradition of fishing, St. Ives is world famous for its art centre, studios, shops, and galleries all over town. The Tate St. Ives, part of the Tate Gallery in London, was opened in 1993 and is, perhaps, the flagship of Cornish art. After such an exciting trip we will be back at the centre in time for dinner.

### Half-Day: Torquay

Would you like to walk the "Agatha Christie" mile and visit some of the places that inspired her writing? Then you must join our half-day trip to Torquay (departure from the centre at 1400h), known as the "Queen of the English Riviera" town. Torquay acquired its popularity as a holiday retreat for Victorians who wanted to enjoy its mild climate. Much of the town's earlier style and elegance has remained present in its modern internationally renowned marina. The parks and gardens along the seafront are outstanding. They provide stunning floral displays, as well as wide-open grassy areas for picnics. Torquay has a modern shopping centre with many high end brand names, as well as a variety of smaller, more individual boutiques, gift, and craft shops. Travel by bus to this major seaside resort in the heart of the English Riviera. Take the time to enjoy the beach, the palm tree lined promenade, and do some luxury shopping. The trip begins with a short-guided tour along the famous "Rock Walk", taking in some of the cliffs on which Torquay is built. We will be back at the centre at 1800h.

### Half-Day: Dartmoor

In 1951 Dartmoor was designated as one of the National Parks of England and Wales. It is a beautiful moorland landscape with wooded valleys and windswept Tors. It covers 953 sq. Km, with a population of approximately 33,000 people, and 10 million visitors each year. The land itself is privately owned, however the public is allowed to roam freely in the open moorland both on foot and horse. Additionally, there are 966 km of public rights of way. Dartmoor is a rich habitat for wildlife and has a wealth of archaeological remains.

We will depart from the centre at about 1400h. After a spectacular drive through some typical Dartmoor scenery, with sheep and original Dartmoor ponies, our first stop will be Lydford Gorge, a lush-wooded steep-sided river. Enjoy the unique view over the moor landscape in all its wondrous facets. Our second highlight of this outing will be the picturesque Widecombe-on-the-moor village, with its church and tiny souvenir shops. We will be back at the centre at 1800h for dinner.

### Half-Day: Exeter

For this half-day trip we will leave the centre around 1400h for a guided sightseeing walk that leads us through the city centre, passing Roman ruins, and to the astonishing St Peter's Cathedral (entrance fee not included). The Cathedral is famous for housing the longest unbroken stretch of Gothic stone vaulting in the world. Afterwards, it is time to enjoy some of South England's best shopping. Stroll along the exciting high street with various shops, cafés, and bars.

### Half-Day: Jurassic Coast

Lyme Regis is a historic unspoiled seaside resort and fishing port on the world famous Cobb harbour. Surrounded by beautiful coastlines and countryside, the area has been awarded World Heritage Site Status. It is famous for its geology and fossils. We will leave around 1400h and be back in time for dinner.

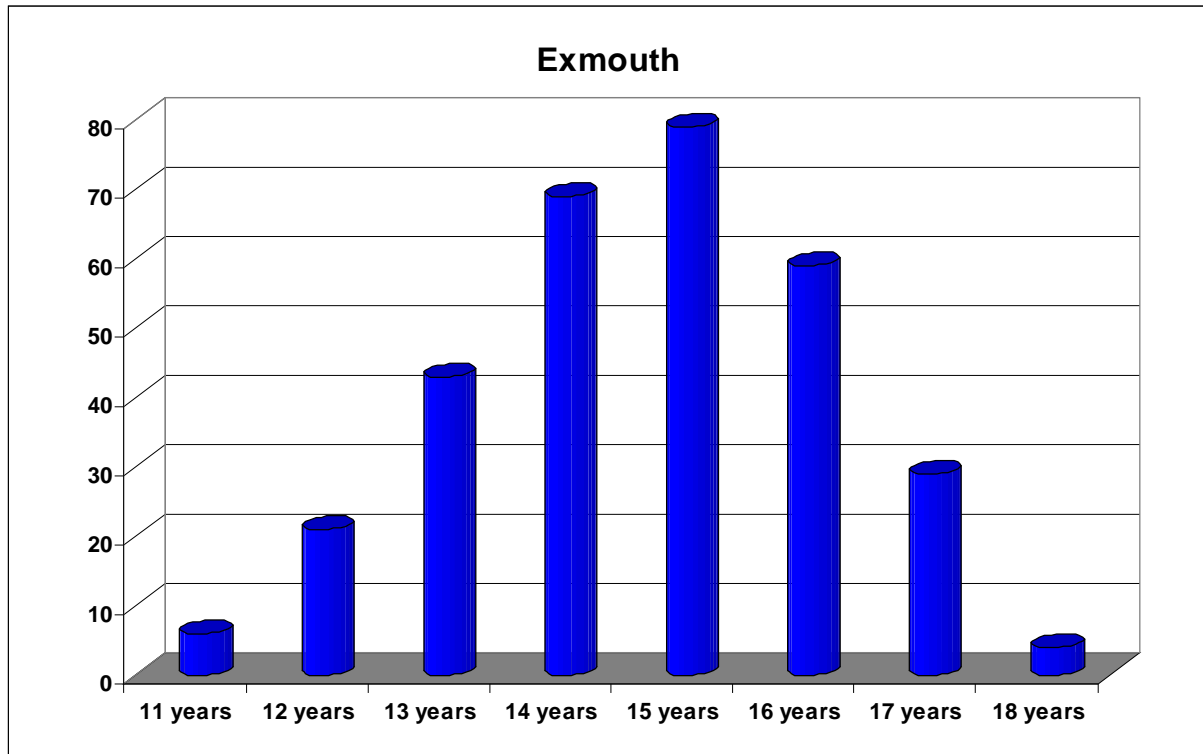
## Special Programme

### The Incredible Party Night

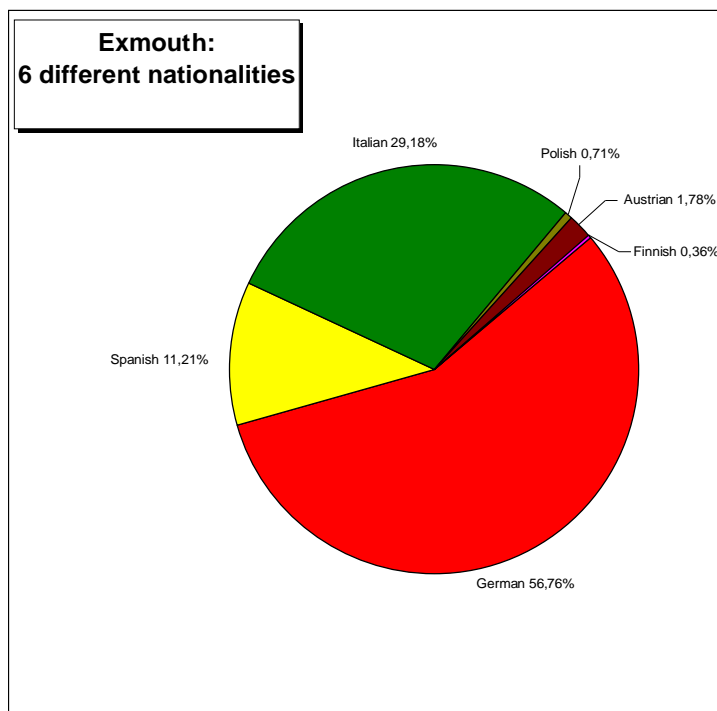
Students from Exmouth, Teignmouth, and Exeter meet together at a cool location for an awesome party. Our DJ spins the latest summer hits to make sure nothing stands in the way of an unforgettable party.

Our Mega-Event for summer 2012 takes place on 06.07, 20.07, and 03.08.2012. You can snag your ticket on location for 12 GBP. The ticket price includes bus transportation to and from the party, admission, and an alcohol-free welcome cocktail.

## Students 2011 – Ages



## Students 2011 – Nationalities



## International Projects' Rules and Regulations for Students

- **Alcohol and Drugs** The consumption of alcohol and drugs is strictly forbidden. Law prohibits young adults under the age of 18 from buying or consuming alcohol in the UK.
- **Pubs, Discos, and Amusements** Young adults under the age of 16 are not allowed to enter pubs in the UK. Students 16 years of age are permitted in a pub until 21.30, but are only able to buy and consume soft drinks. Visiting pubs is only advisable if you are accompanied by a member of staff, group leader, or home stay host. Discos / Nightclubs and amusement arcades are strictly out of bounds for all students under 18 years of age.
- **Smoking** It is illegal for young adults under the age of 18 to buy and smoke cigarettes at all destinations.
- **Theft** Shoplifters and thieves are prosecuted in the UK, irrespective of the value of the stolen article.
- **Weapons and Dangerous Articles** All weapons (including flick-knives) are forbidden. CS gas is also illegal.
- **Fire Extinguishers** Fire extinguishers are located throughout the centres and their buildings. These are for emergency use only. If a fire extinguisher is tampered with in ANY way, students will be fined for its misuse.
- **Going Out** Students are allowed to go out in the evenings in groups with a minimum of 3 students pending the Centre Manager's permission. They must adhere to the following laws and be back in the residence or with their private host by: Ages 13 & 14: 22h00, 15 & older: 24h00. If you are going to be late please call your host or centre office in order to ensure that we know where you are and do not have to look for you. The above times do not apply when students are involved in an organised evening activity. **This rule does not apply to students under the age of 13 since they have to be supervised at all times.**
- **Leaving the Campus / College grounds/ Arranging their own excursion** Students under the age of 17 are not allowed to leave the destination town or village unless they are accompanied by a member of staff.
- **Doors** Entrance doors to the residences **must not** be kept open. This is for your own safety. Theft can, and does occur. Careless security on your part will place you and your belongings at risk.
- **Compulsory Activities** All lessons along with the daily morning assembly must be attended.
- **Damage** Incidences of damage to property and buildings caused by misuse or vandalism will be dealt with severely. Students will have to pay for ALL damages.
- **Private** Doors which are marked with signs that state "private" are not to be opened. Some private areas will be unlocked for fire safety reasons, but entrance is still forbidden.
- **Noise** Students are asked to respect those around them, and keep noise to a minimum when returning to residences or private homes late in the evening. Social areas in the residences may be used after the evening activity finishes, but students should be in their rooms by 23.00. Students are not to congregate outside residences late in the evening. Many centres are situated in residential areas – please be considerate of those who live close by.
- **Mobiles** The use of mobile telephones during lesson time is strictly prohibited. Failure to comply with this may result in staff confiscating your mobile phone. IP staff does not accept any responsibility for the loss of or damage to mobile phones.
- **Swimming** Swimming in the sea is allowed on the condition that your parents have not specified otherwise. Swimming in the sea is not an organised IP activity, and therefore IP staff cannot be held responsible for student safety. Swimming in the sea when the red flag is flying is absolutely forbidden.
- **Internationalism** International Projects' aim is to bring young people from all over the world together in an environment where they can meet friends and have fun. Racist or sexist behaviour towards other students will not be tolerated.

### Parental Permission

We guarantee that our qualified staff will supervise all elements of the IP programme. However, some of the additional activities such as: diving, sailing, surfing, riding a bike, and horse riding we work with local providers, and require your permission for your child to take part in these activities. The same applies for activities undertaken by your son/daughter on their own outside of the IP Programme. Please complete the form below in order to stop your child from taking part in the following activities:

- My son/daughter is allowed to be in town on his / her own after .....(please specify).
- My son/daughter is allowed to swim in the sea at her / his own risk.
- In case of hospitalisation, I authorize the legal representative of IP to take all necessary decisions (medical treatments, hospitalisation, surgery) regarding my child in respect of the medical report and will reimburse all medical expenses that could possibly be engaged by IP for my child.

I, THE UNDERSIGNED.....(First name).....(Surname)  
 PARENT OR LEGAL GUARDIAN OF:  
 First name..... Surname.....  
 Date of birth.....  
 Staying in ..... Arrival Date: .....

I do not want my child to take part in the activities mentioned in point 1 to 3 (please ignore if not applicable)

DATE:.....SIGNATURE: .....

PLEASE NOTE: THIS AUTHORIZATION HAS TO BE RETURNED TO THE IP OFFICE IN BREMEN ONE WEEK BEFORE ARRIVAL.  
 If the Parental Permission form is not returned, IP assumes that the parents agree to the set standards and procedures which govern our language holidays and are based on the laws of the destination country.